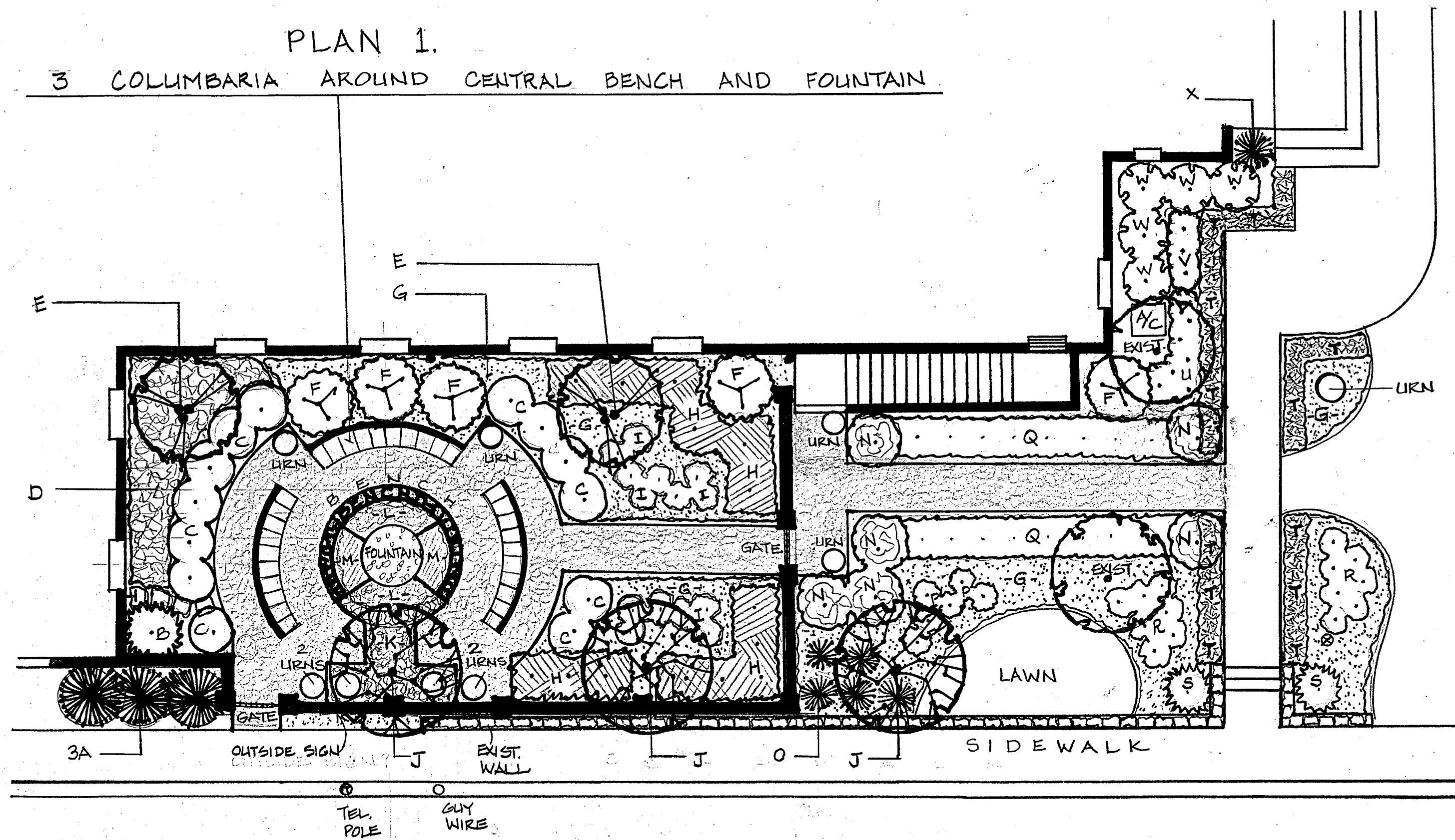


PLAN 1.

3 COLUMBARIA AROUND CENTRAL BENCH AND FOUNTAIN



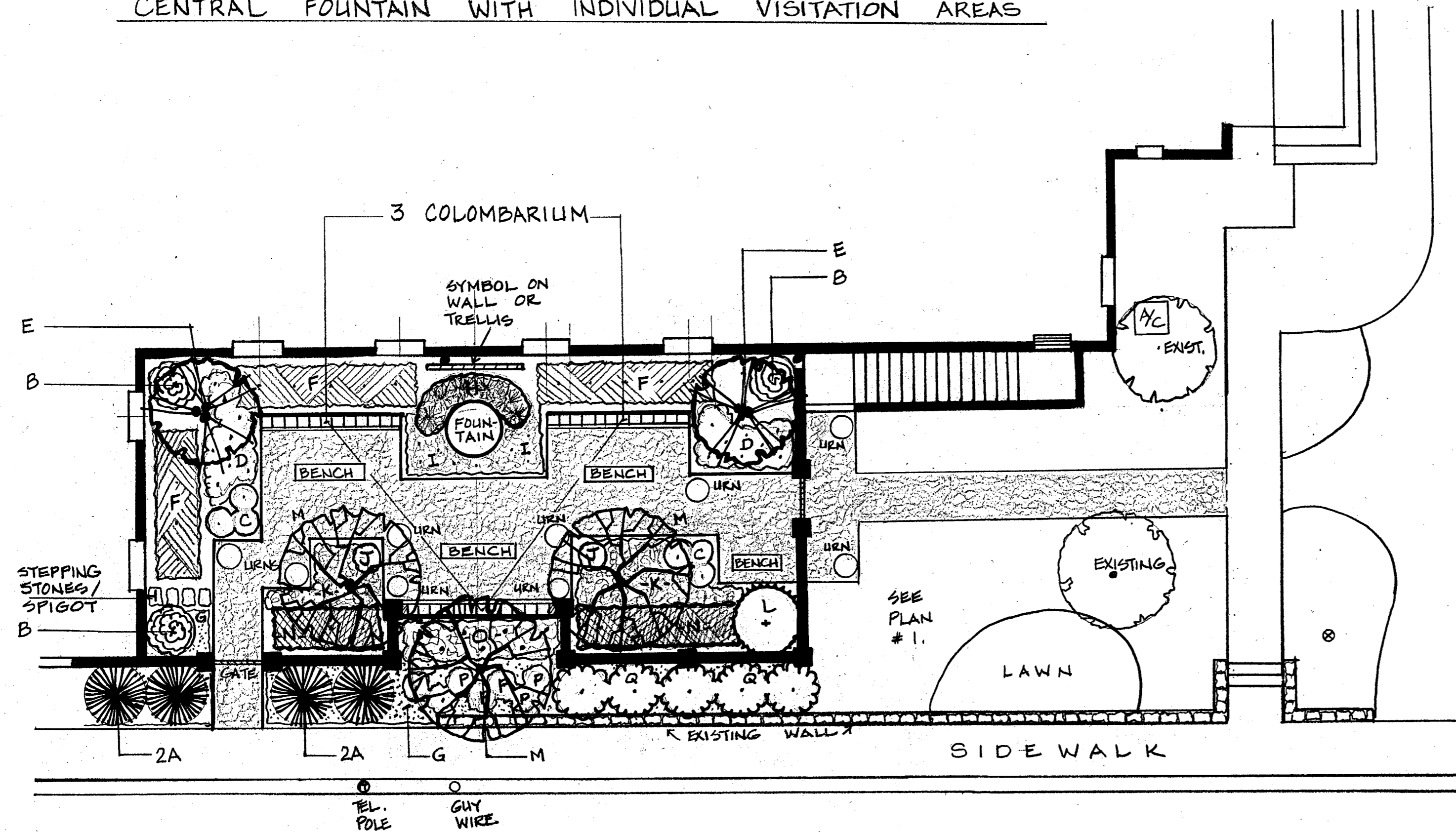
PLANT KEY AND SUGGESTED BUYING SIZES  
First United Methodist Meditation Garden, Plan 1.

A	3	THUJA PLICATA "FOREVER GOLDY" OR 3 JUNIPERUS CHINENSIS "BLUE POINT", 5 - 6' (UPRIGHT WESTERN ARBORVITAE OR UPRIGHT JUNIPER TYPE)
B	1	TAXUS X "HICKSI" OR 1 CEPHALOTAXUS HARRINGTONIA "FASTIGIATA", 4 - 5' (UPRIGHT JAPANESE YEW OR UPRIGHT JAPANESE PLUM YEW)
C	13	BUXUS KOREANA "WINTERGREEN" OR AZALEA "KARENS", 18 - 24" (WINTERGREEN BOXWOOD OR 13 EVERGREEN KARENS AZALEAS)
D	18	DRYOPTERIS AUSTRALIS OR 18 ARALIA CORDATA "SUN KING", 1 GAL. (DIXE WOOD FERNS OR SUN KING SPIKENARD)
E	2	AMELANCHIER LAEVIS, 2 AMELANCHIER GRANDIFLORA, OR 2 CERCIS CANADENSIS "RUBY FALLS" OR "COVEY", 7 - 8' (SERVICEBERRY TYPE OR WEeping REDBUD TYPE)
F	4	RHODODENDRON X "BOURSAULT" OR "EDITH BOSLEY", 24 - 30" (RHODODENDRON)
G	50	VINCA MINOR, 1 GAL. (EVERGREEN PERIWINKLE)
H	14	TAXUS MEDIA "WARDII", 18 - 24" (DENSE YEW)
I	14	HEUCHERA VILLOSA "MIDNIGHT ROSE" OR "OBSIDIAN", 1 GAL. (HYBRID CORALBELLS)
J	3	ZELKOVA SERRATA "GREEN VASE", ULMUS PARVIFLORA "FRONTIER" OR SYRINGA RETICULATA "VORY SILK", 3.0" CALIPER (JAPANESE ZELKOVA, LACEBARK ELM HYBRID, OR JAPANESE TREE LILAC)
K	1	FLAT PACHYSANDRA TERMINALIS, 50 PP/FLAT (SPURGE)
L	24	ANNUALS, 6" POTS, MATCHING
M	24	ANNUALS, COMPLEMENTARY AND SUBTLE CONTRAST TO "L" ABOVE
N	6	HYDRANGEA QUERCIFOLIA "RUBY SLIPPERS" OR 6 HYDRANGEA PANICULATA "LITTLE QUICK FIRE", 3 OR 5 GAL. (DWARF OAKLEAF OR PANICLE HYDRANGEAS, ALL ALIKE)
O	5	PANICUM VIRGATUM "SHENANDOAH" OR 5 PENNISETUM ALOPECURIODES "BURGUNDY BUNNY" OR "KARLEY ROSE", 3 GAL. (SWITCHGRASS OR FOUNTAIN GRASS, ALL ALIKE)
P	6	ASTILBE SIMPLICIFOLIA "VISIONS IN PINK" OR 6 HELLEBORUS X "PINK FROST", 1 GAL. (FALSE SPIREA OR LENTEN ROSE)
Q	16	BUXUS KOREANA "WINTERGREEN", 18 - 24" (WINTERGREEN BOXWOOD)
R	14	IRIS SIBIRICA "BUTTER AND SUGAR" OR "PINK HAZE", 1 GAL. (SIBERIAN IRIS)
S	2	PICEA ABIES "PUMILA", 3 OR 6 GAL. (DWARF NORWAY SPRUCE)
T	53	GERANIUM CANTAGBRIENSE "BIKOVA PINK", 53 NEPETA X "LITTLE TITCH", OR 53 LIRIOPE SPICATA "BIG BLUE", 1 GAL. (CRANESBILL, DWARF CATMINT, OR LILYTURF)
U	8	RUDBECKIA FULGIDA "GOLDSTURM" OR 8 LEUCANTHEMUM SUPERBUM "BANANA CREAM", 1 GAL. (BLACK EYED SUSANS OR SHASTA DAISY)
V	3	SEDUM X "CHERRY TART", 3. "BLUE SPRUCE", OR 3. "BLUE PEARL", 1 GAL. (STONECROP)
W	5	BUXUS "WINTER GEM" OR 5 ILEX MESERVAE "BLUE PRINCE/PRINCESS (1 MALE, 4 FEMALE), 24 - 30" SPECIMENS (WINTER GEM BOXWOOD OR BLUE HOLLY)
X	1	SCHIZACHRYLUM SCOPARIUM "THE BLUES" OR "CAROUSEL" (LITTLE BLUESTEM)

A CUSTOM LANDSCAPE FOR	
FIRST UNITED METHODIST CHURCH	
541 MAIN STREET	
MILFORD, OHIO 45150	TEL:
SCALE: 1/8" = 1'-0"	DATE: 12/17
DESIGN BY MARTHA WASSERMANN	
PROFESSIONAL PLANNING & PROJECT MANAGEMENT SERVICES	
6213 ROBISON ROAD • CINCINNATI, OHIO 45213 • 513-631-3724 • WWW.MARTHAWASSERMANN.COM	

PLAN 2.

CENTRAL FOUNTAIN WITH INDIVIDUAL VISITATION AREAS



PLANT KEY AND SUGGESTED BUYING SIZES

First United Methodist Meditation Garden, Plan 2.

- A 2 THUJA PLICATA "FOREVER GOLDY" OR 2 JUNIPERUS CHINENSIS "BLUE POINT", 5 - 6 (UPRIGHT WESTERN ARBORVITAE OR UPRIGHT JUNIPER TYPE)
- B 3 HYDRANGEA QUERCIFOLIA "RUBY SLIPPERS" OR 3 HYDRANGEA PANICULATA "LITTLE QUICK FIRE", 3 OR 5 GAL. (DWARF OAKLEAF OR PANGLE HYDRANGEAS)
- C 6 HELLEBORUS X "PINK FROST" OR 6 HOSTA "FIRST FROST", 1 GAL. (LENTEN ROSE OR HOSTA)
- D 16 ASTILBE SIMPLICIFOLIA "SPRITE", 1 GAL. (FALSE SPIREA)
- E 2 AMELANCHIER LAEVIS OR 2 GRANDIFLORA, OR 2 CERCIS CANADENSIS "RUBY FALLS" OR C. "COVEY", 7 - 80" (SERVICEBERRY OR WEeping REDBUD TYPE)
- F 14 TAXUS MEDIA "WARDI", 18 - 24" (DENSE YEW)
- G 16 VINCA MINOR, 1 GAL. (EVERGREEN PERIWINKLE)
- H 6 CAREX MORROWII "BLUE ZINGER", 1 GAL. (BLUE SEDGE GRASS)
- I 10 GERANIUM SANQUINEUM "VISION LIGHT PINK", 1 GAL. (CRANESBILL)
- J 2 ACANTHUS SPINOSA, ARALIA CORDATA "SUN KING", OR HOSTA "FRANCEE", 1 GAL. (BEARS BRITCHES, SPIKENARD, OR HOSTA)
- K 24 CERATOSTIGMA PLUMBAGINOIDES OR GALIUM ODORATUM, 1 GAL. (PLUMBAGO OR SWEET WOODRUFF)
- L 1 RHAMNUS FRANGULA "ASPLENIFOLIA", 5 GAL. (SPECIMEN FERNLEAF BUCKTHORN)
- M 3 ZELKOVA BERRATA "GREEN VASE", ULMUS PARVIFLORA "FRONTIER", OR SYRINGA RETICULATA "IVORY SILK", 3.0" CALIPER, ALL ALIKE (JAPANESE ZELKOVA, LACEBARK ELM HYBRID, OR JAPANESE TREE LILAC)
- N 6 BUXUS KOREANA "WINTERGREEN", 18 - 24" (WINTERGREEN BOXWOOD)
- O 7 IRIS SIBIRICA "CAESAR'S BROTHER" OR "BUTTER AND SUGAR", 1 GAL. (SIBERIAN IRIS)
- P 7 RUDBECKIA "LITTLE SUSIE" OR 7 ASTILBE "MAGGIE DALEY", 1 GAL. (BLACK EYED SUSANS OR FALSE SPIREA)
- Q 5 SPIREA JAPONICA "LITTLE PRINCESS", SYRINGA MEYERII "PALABIN", OR 5 HYDRANGEA PANICULATA "BOBO", 5 GAL. (DWARF TYPE SPIREA, LILAC OR HYDRANGEA)

PLAN 2

A CUSTOM LANDSCAPE FOR	
FIRST UNITED METHODIST CHURCH	
541 MAIN STREET	
MILFORD, OHIO 45150	TEL:
SCALE: 1/8" = 1' 0"	DATE: 12/17
DESIGN BY MARTHA WASSERMANN	
PROFESSIONAL PLANNING & PROJECT MANAGEMENT SERVICES	
6213 ROBISON ROAD • CINCINNATI, OHIO 45213 • 513-631-3724 • WWW.MARTHAWASSERMANN.COM	